

February 8, 2024

**POLK COUNTY, A POLITICAL SUBDIVISION OF
THE STATE OF FLORIDA**

**ADDENDUM # 5
BID # 24-154, Emergency Operations Center Warehouse**

This addendum is issued to clarify, add to, revise and/or delete items of the Bid Document for this work. This Addendum is a part of the Bid Document and acknowledgment of its receipt shall be noted on the Addendum.

Contained within this addendum: Questions & answers.

Respectfully,

Tabatha Shirah

Procurement Analyst
Procurement Division

**This Addendum sheet should be signed and submitted with your
bid submittal. This is the only acknowledgment required.**

Signature

Printed Name:

Title:

Company:

BID # 24-154, Emergency Operations Center Warehouse

Addendum # 5

Question 1: Can a location for the new communication vault be provided? Electrician not seeing a specific location on the Electrical Site Plan (Sheet E201) for installation of PB-1. The notes are in red as to the existing Vault and communications tower location, possible existing 4" conduits capped locations, and assuming the new location of the communications vault.

Answer 1: The new vault location will be where the existing conduit as mark in attached drawing. The approx. LF is approximately 300 LF +/- . The plan (E201) also indicated the deletion of the conduit mark in X.

STRUCTURE ID: 101500

Precast Concrete 4'-0" X 4'-0" X 4'-0" Communication Pull Box

STEEL COVER
~205 LBS. EA.

HS-20 4X4 FRAME & DRAG OFF COVERS | GALVANIZED | DIAMOND PLATE FINISH

GROUND ROD HOLE

PULL IRONS

RECESSED SUMP

PLAN VIEW (BODY)

SEGMENTED THINWALL KNOCKOUT

BOXY & FRAME
~350 LBS.

ELEV. VIEW

STANDARD PULL BOX FEATURES

- Designed for 100-200 Lbs. Loading
- Segmented Thin Wall Knockouts (shown)
- Pull Irons Cast In Floor (shown)
- 4" O.D. Pressurized Sump in Floor (shown)
- 2" O.D. Ground Hole in Floor (shown)
- Hot Dipped Galvanized Steel Cover (shown)
- Diamond Plate Finish on Cover (shown)
- Smooth Corners for Safe Installation & Quality & It Just Looks Better!

PULL BOX OPTIONS

- Unistrut Cast Inp Wall for Racking in lieu of Pull Irons
- Terminal Box Cast Into Wall in lieu of Thin Wall Recess
- Non-Magnetic Racking
- Plastic Coated Racking
- Cast In Grounding Lug
- Pull Irons - Add or Change Locations
- Aluminum Lids in lieu of Galvanized Steel Lid
- Divider Plate for Multi-Purpose Sumps

LOCKE SOLUTIONS PROUDLY BASED IN HOUSTON, TEXAS

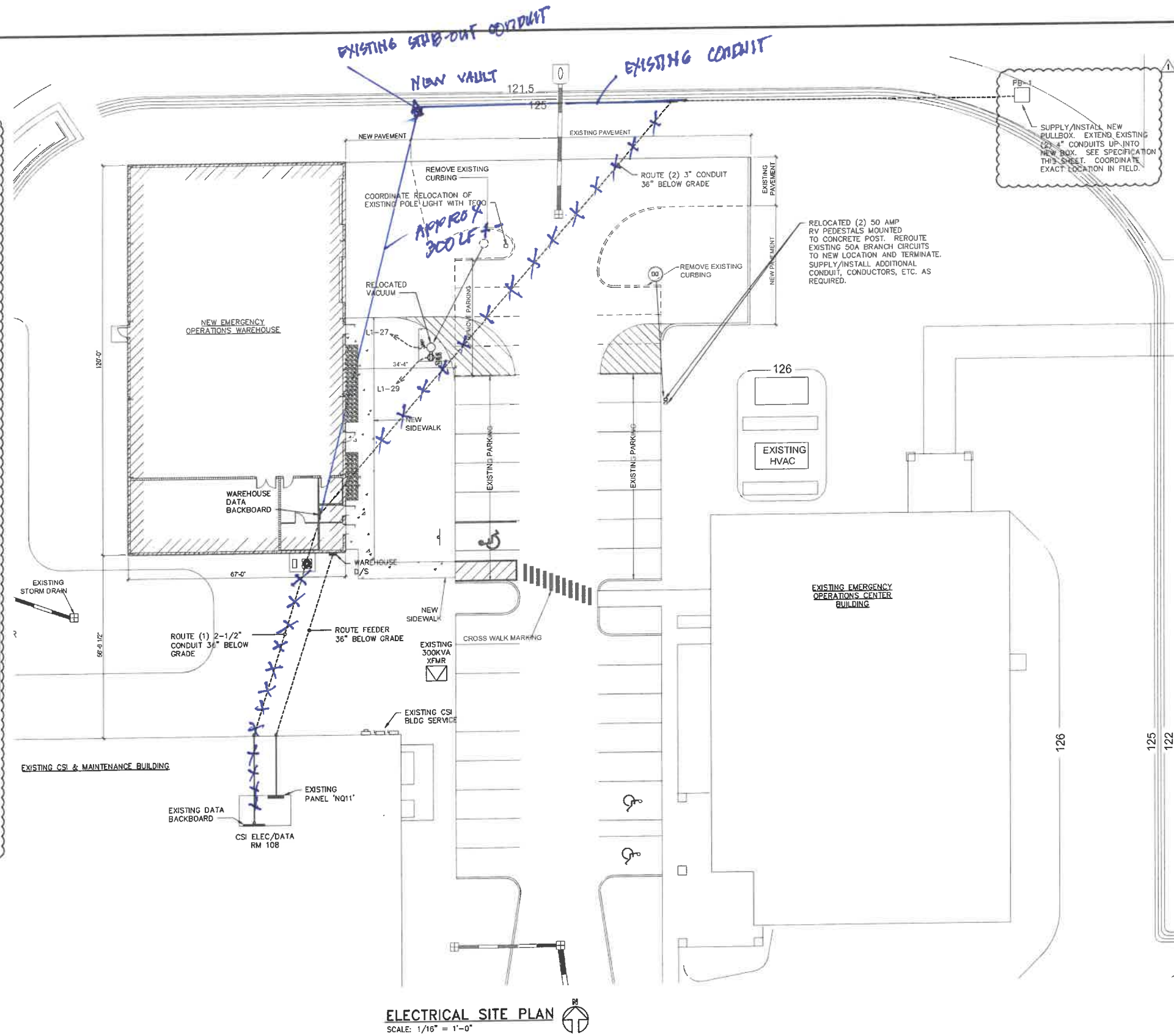
T: 832-804-7082
F: 832-804-7071
E: info@lockesolutions.com

LOCKESOLUTIONS.COM

PULLBOX SCHEDULE

MARK	DESCRIPTION
PB-1	SEE SPECIFICATION ABOVE.

NOTE:
FURNISH AND INSTALL GRAVEL, 1FT. DEEP UNDER ENTIRE FOOTPRINT OF PULLBOX FOR DRAINAGE IN ACCORDANCE WITH MANUFACTURER'S INSTRUCTIONS. BOXES SHALL BE INSTALLED FLUSH IN GRADE. ALL STUBBED UP CONDUITS SHALL HAVE BAND INDICATING FEEDING, DESIGNATION AND ROUTING LOCATIONS. CONDUITS SHALL TERMINATE 8 INCHES BELOW PULLBOX COVER.



ELECTRICAL SITE PLAN
SCALE: 1/16" = 1'-0"

Furr, Wegman & Banks
Architects, P.A.

433 EAST ORANGE ST.
LAKELAND, FL 33801
EMAIL: INFO@FWBARCHITECTS.COM
WWW.FWBARCHITECTS.COM
PH: 863.684.1211



REVISION DESCRIPTION - THIS SHEET ONLY

DATE	REVISION DESCRIPTION - THIS SHEET ONLY
06/22/23	ADDENDUM NO. 1

ELECTRICAL SITE PLAN
POLK COUNTY
NEW EMERGENCY OPERATIONS WAREHOUSE

1880 JIM KEENE BLVD.
WINTER HAVEN, FL 33880
PHASE: 100% CONSTRUCTION DOCUMENTS

DATE: 06/22/2023

PROJ MGR: WBB
CKD BY: DJN

JOB NUMBER: 22-33
SHEET NUMBER: E201

