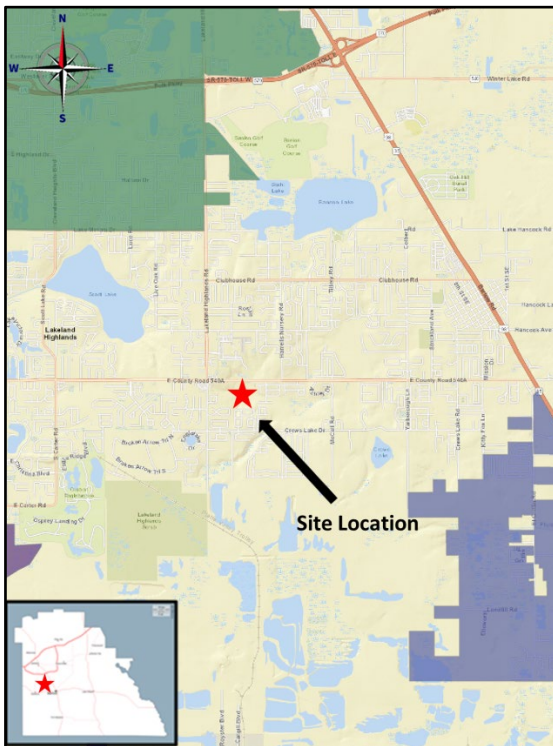


POLK COUNTY DEVELOPMENT REVIEW COMMITTEE CASE OVERVIEW

ID #: 113

DRC Date:	July 11, 2024
Planning Commission Date:	August 7, 2024
BoCC Dates:	September 3, 2024
Applicant:	Polk County
Level of Review:	Level 4 Review, Comprehensive Plan Map Amendment
Case Number and Name:	LDCPAS-2024-9 CR 540A ROS
Request:	County initiated Small Scale Comprehensive Plan Map Amendment to change the Future Land Use (FLU) designated from Residential Low-1 (RL-1) to Recreation Open Space (ROS) on approximately 39 acres.
Location:	South of CR 540A E, east of Tierra Vista Cir, west of Cross Creek Blvd, north of Crews Lake Hills Loop N, south of the City of Lakeland in Section 21, Township 29, Range 24.
Property Owner:	Polk County
Parcel Size:	±39 acres (242921-287000-000500)
Development Area/Overlays:	Transit Supportive Development Area (TSDA)
Future Land Use:	Residential Low-1 (RL-1)
Nearest Municipality	Lakeland
DRC Recommendation:	Approval
Planning Commission Vote:	Pending
Case Planner:	Aleya Inglima, Planner II

Location



Current Future Land Use

