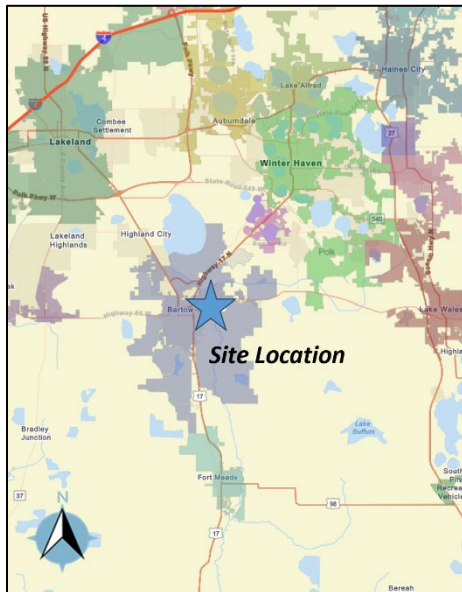


# POLK COUNTY DEVELOPMENT REVIEW COMMITTEE CASE OVERVIEW

**ID #: 126**

<b>DRC Date:</b>	June 27, 2024
<b>Planning Commission Date:</b>	September 4, 2024
<b>BoCC Dates:</b>	October 15, 2024
<b>Applicant:</b>	Polk County
<b>Level of Review:</b>	Level 4 Review, Comprehensive Plan Map Amendment
<b>Case Number and Name:</b>	LDCPAS-2024-14 (Peace River CPA)
<b>Request:</b>	County-initiated Small Scale Comprehensive Plan Map Amendment to change the Future Land Use (FLU) designation from Agricultural/Residential Rural (A/RR) & Linear Commercial Corridor (LCC) to Recreation/Open Space (ROS) at the Bartow Peace River Landing.
<b>Location:</b>	2001 East Highway 60, north of Wabash Street, west of Moose Lodge Road, east of US-17, east of Bartow in Section 04, Township 30, Range 25.
<b>Property Owner:</b>	Polk County
<b>Parcel Size:</b>	±11.67 acres (253004-000000-012140)
<b>Development Area/Overlays:</b>	Rural Development Area (RDA)
<b>Future Land Use:</b>	Agricultural/Residential Rural (A/RR) & Linear Commercial Corridor (LCC)
<b>Nearest Municipality</b>	Bartow
<b>DRC Recommendation:</b>	Approval
<b>Planning Commission Vote:</b>	Pending
<b>Case Planner:</b>	Aleya Inglima

**Site Location**



**Current Future Land Use Map**

